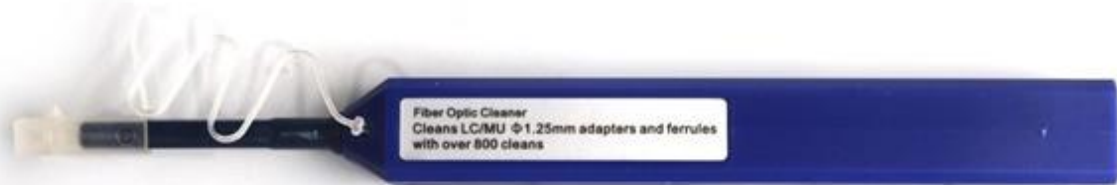




Fiber optic connector cleaner

Product Information



fiber optic connector cleaner:

- 1.Cleaning system rotates 180 for a full sweep
- 2.Disposable with 800+ cleanings per unit

Fiber optic connector cleaner

Product display

Fiber optic connector cleaner

Fiber Optic Cleaner-Mini Designed to specially work well with the LC etc. 1.25mm universal connector connectors, this instrument cleans the ferrule end faces removing dust, oil, and other debris without nicking or scratching the end face.





Features

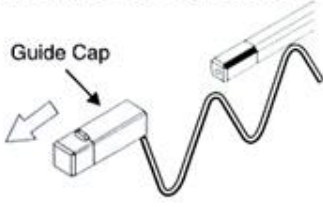
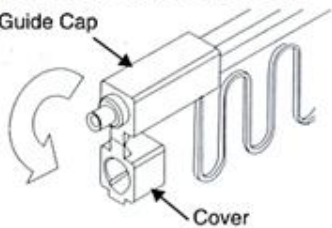
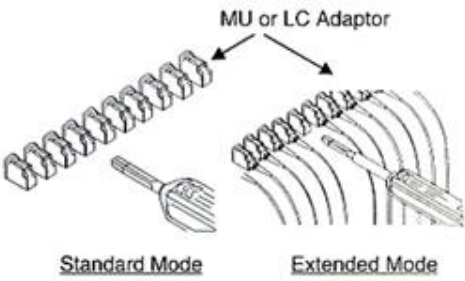
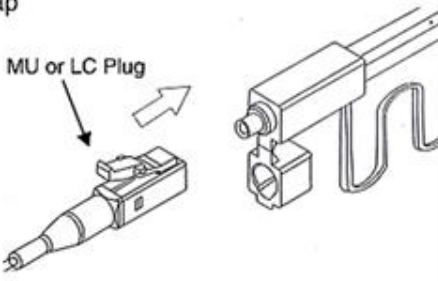
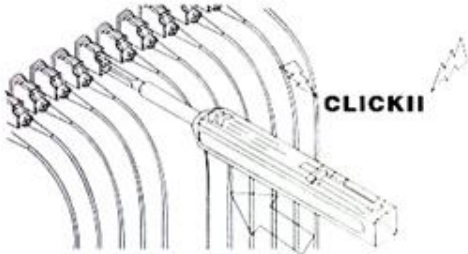

1. Easy pushing motion engages connector and initiates cleaner
2. Disposable with 800+ cleanings per unit
3. Made from anti static resin
4. Cleaning micro fibers are densely stranded and debris free
5. Extendable tip reaches recessed connectors
6. Cleaning system rotates 180 for a full sweep
7. Audible click when engaged

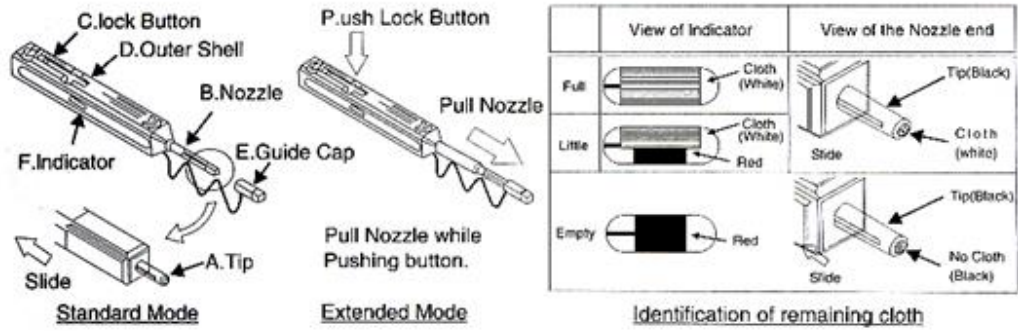
Applications

1. Fiber network panels and assemblies
2. Outdoor FTTX applications
3. Cable assembly production facility
4. Testing laboratories
5. Server, switches, routers and OADMS with LC interface

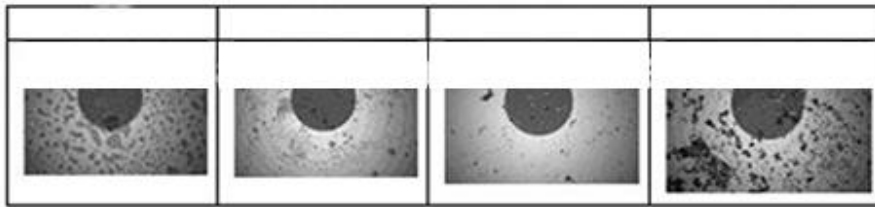


C

<p><Connector inside adaptor> 1.Remove Guide Cap from the device</p> 	<p><Connector plugs alone> 1.Open the Cover on the Guide Cap</p> 
<p>2.Insert tip of cleaner into MU/LC Adaptor</p> 	<p>2.Insert MU/LC connector into the Guide Cap</p> 
<p>3.Push the Outer Shell to start cleaning the MU/LC connector end face .A "click" sound indicates end of cleaning process. Close the cover after use.</p>  <p>Be careful not to slant the One-Click Cleaner MU/LC while inserting into the adapter. Do not overly exert force during insertion as this may cause damage to both the connector and the One-Click Cleaner MU/LC. If pushing Outer Shell is inhibited,remove One -Click Cleaner MU/LC form adapter and ensure that there is no sizeable debris inhibiting the cleaning process.</p>	<p>3.Push the Outer Shell to start cleaning the MU/LC connector end face.A "click" sound indicates end of cleaning process. Close the cover after use.</p>  <p>Be careful not to slant the MU/LC connector while inserting into the Guide cap. Do not overly exert force during insertion as this may cause damage to both the connector and the One-Click Cleaner MU/LC. If pushing Outer Shell is inhibited,remove One -Click Cleaner MU/LC from adapter and ensure that there is no sizeable debris inhibiting the cleaning process.</p>



· Fiber head before cleaning



· Fiber cleaning pen cleaning

